



Proudly Sold & Serviced By:

Able Scale Co Pty Ltd

Ph: 1300 731 360

21 Green St Thomastown VIC. 3074

find us on the web: www.ablescale.com.au



UNI-9





SALES / PLU 0



27-06-2012 (WED) 13:32

**CHECK THE WEIGHT BEFORE PRODUCTION.
ENTER PLU No. AND PRESS [PLU] KEY.**



TARE	kg	ZERO	WEIGHT	kg	UNIT PRICE	€/kg	TOTAL PRICE	€
0,000			0,000		0,00		0,00	



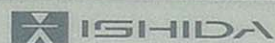
FRUITS



VEGETABLES

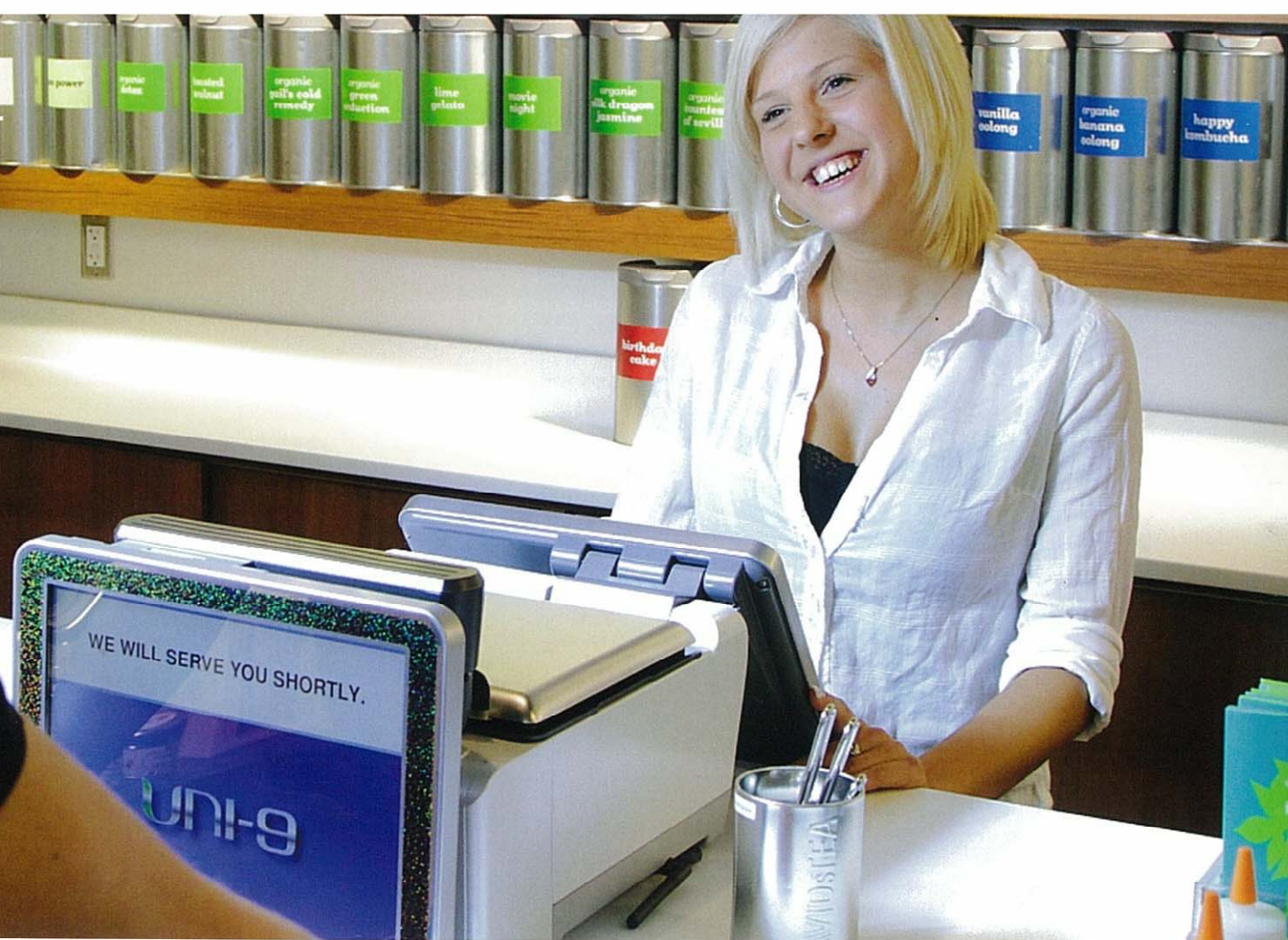
→0←	U/P	FIX	→T←
FEED	7	8	9
% TARE	4	5	6
ManWT oz	1	2	3
SUB TOTAL	0	00	C
◀	PRINT	X	PLU

Max 6kg/15kg Min 0,04kg e = 0,002kg/0,005kg T = - 5,998kg



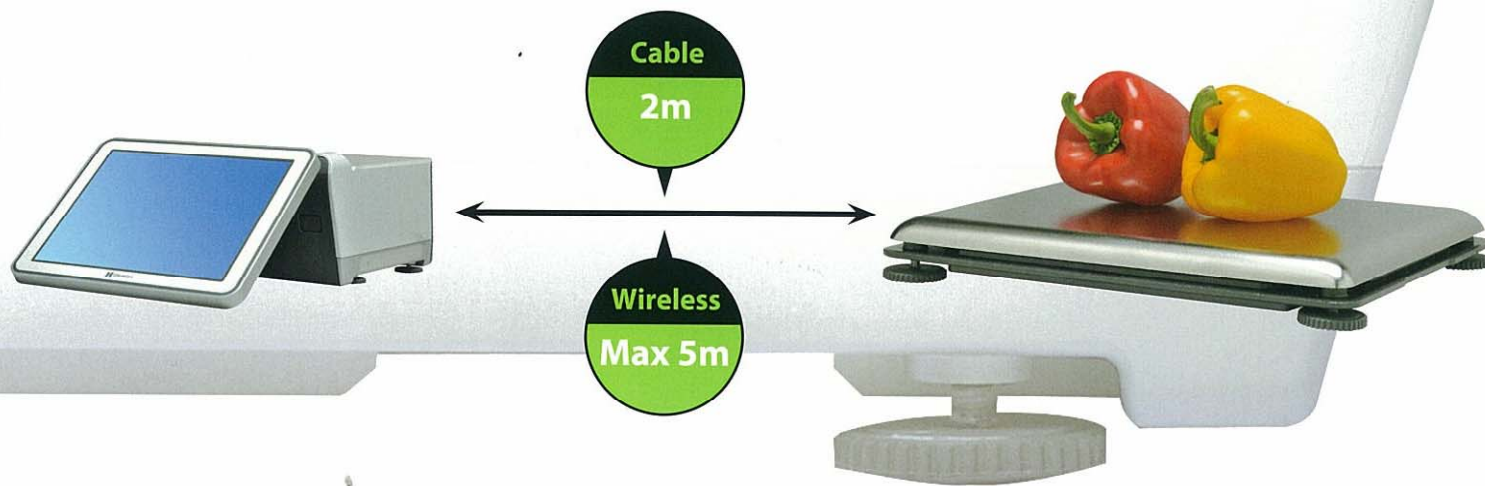
COMPACT

UNI-9's compact design fits nicely on virtually any counter size, big or small and occupies a very small foot print. One of UNI-9's models can also have a wireless remote platform. Thus allowing to work in a more flexible store layout. By positioning the platter up to 5meter away from the scale unit.



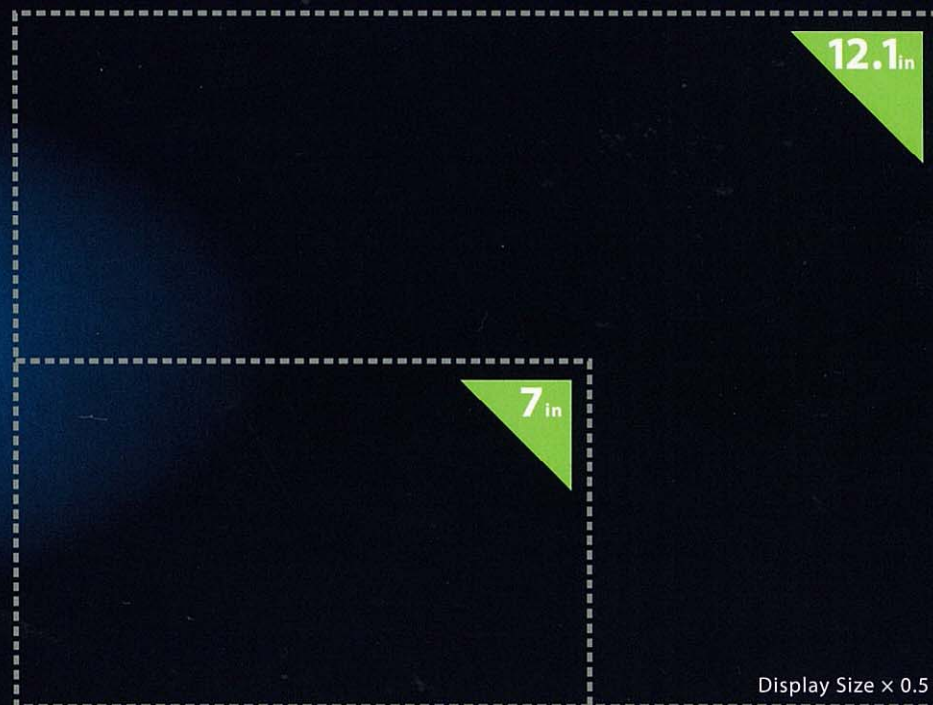
REMOTE SCALE

UNI-9 provides wireless control of the scale to provide more flexibility on your scale.



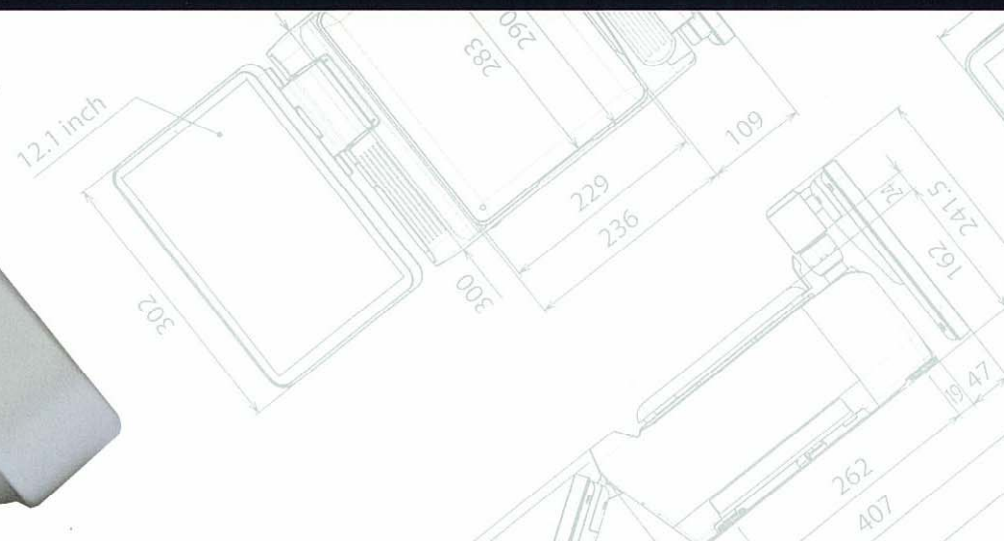
IMPACT

with a 7" or 12" customer display with LED backlight technology. According to model type, both Hi-tech displays designed and built-in Japan, makes images and videos look colorful and vivid.



SOFTWARE

The UNI-9's combination of a PC-BASED platform and a stunning crystal sharp LED display brings to life the operator and customer interaction.



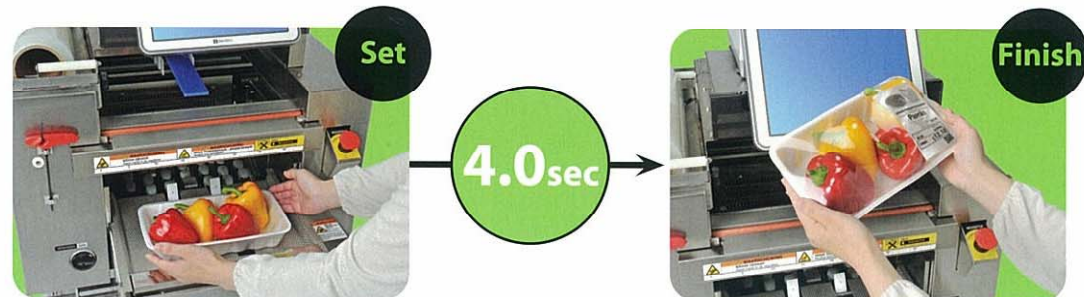
QUICK

ALMOST 120 years experience in the retail & industrial scale business. ISHIDA provides UNI-9 operator with fast user-friendly scale operation.



MORE PRODUCTIVITY

UNI-9 allows you to connect with Ishida table to wrapping machine.



UNIQUE

MULTI SPEED SELECTOIN FROM 80mm/sec up to a max of 150mm/sec (Print quality may vary depending on paper quality)

2D barcode on label or receipt allowing customer to easily access WEB info.

Standard Ishida fonts with the possibility to print even true type fonts and extra large fonts for promotional prices.

Link product images to a PLU to show or customer display and print the exact same image on the label.

Before
UNI-9



After
UNI-9

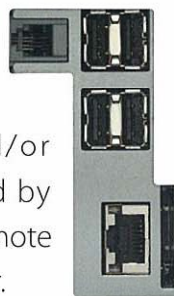


After
Shopping



OPTIONS

Several optional peripherals are available for UNI-9 series : External Ethernet Printer, USB scanner, SD card, CASH drawer, Cassette (max7units) allowing different label sizes and/or formats to easily changed by swapping cassttes. Wi-Fi remote platform and wireless platter.



Scanner



Cassette



Printer



Mobile printer



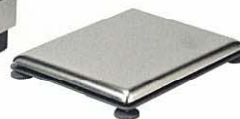
Drawer



Port guard



Remote scale (30kg)



Remote scale



Big tray



Wi-Fi device



Scale connction cable (2m)



Serial port cable

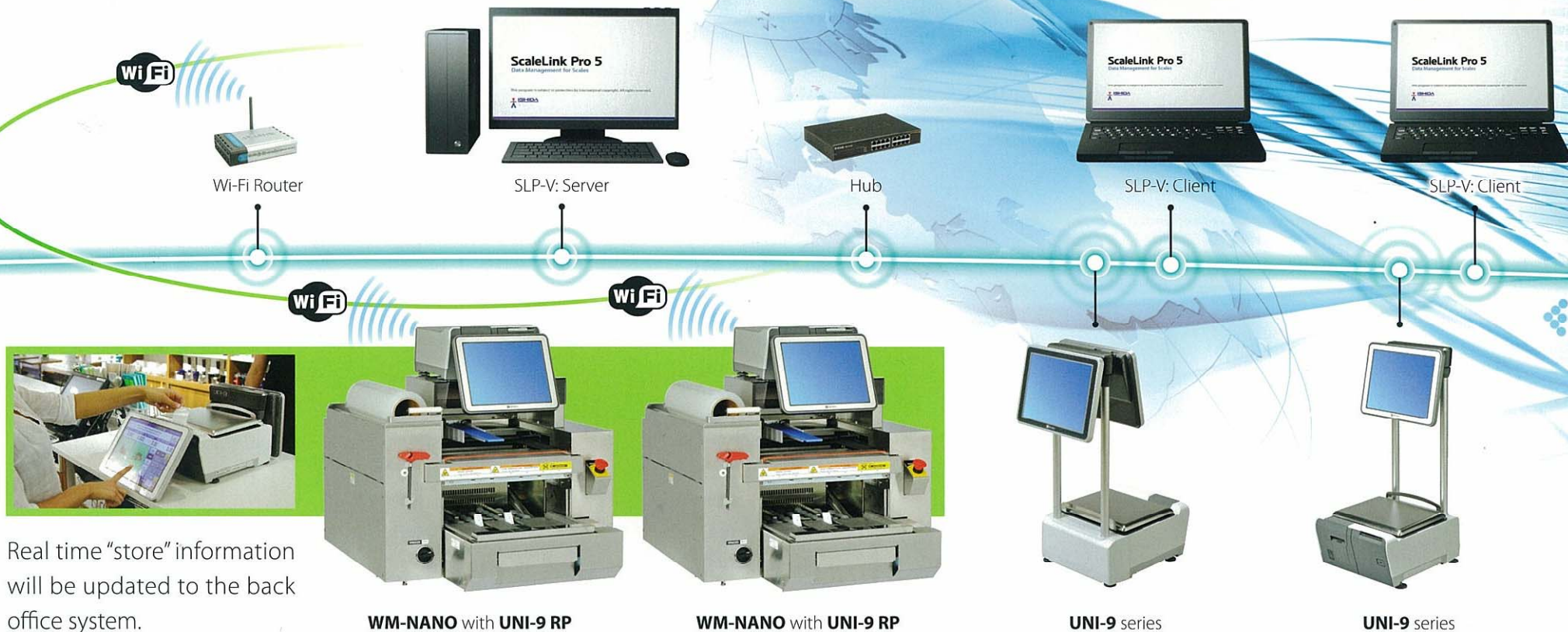


SD card

REMOTE MAINTENANCE

With the possibility of remote service maintenance, the UNI-9 series reduces down time operation thanks to easy connectivity for software service support via ethernet or Wi-Fi.





GREEN

Energy **DOWN**

Using a SOLIDSTATE DRIVE (SSD) instead of a normal hard disk drive, the UNI-9 consumes less battery and receives hard disk failure as the SSD has no mechanical movement.



Waste **DOWN**

Linerless cassette receives the amount of backing paper to zero, increased the paper amount by twice thus making the UNI-9 greener than ever.



Lead **FREE**

All UNI-9 models fully comply with RoHS regulations thus making it total lead free.

